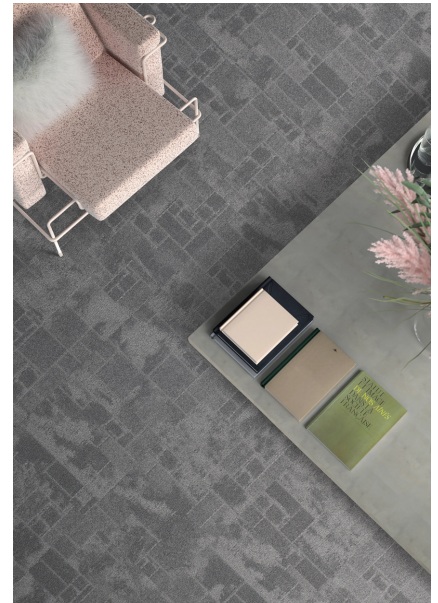


| | | |
|----------------------|------------------------|---|
| Stijlnummer | 5T580 | |
| Collectie | Floor Architecture III | |
| Producttype | Tapijttegel | |
| Construction | Standard | Data + Performance |
| Type Fabricage | ISO 2424 | tufted 1/10" 39.4 per 10cm |
| Uitzicht | ISO 2424 | Multilevel-Patroonlus |
| Vermethode | EN 994 | 100% In Oplossing Geverfd |
| Productformaat | EN 994 | 50 cm x 50 cm 20 tiles (5 m²) per box |
| Primaire Backing | ISO 2424 | Pet Nonwoven |
| Secundaire Backing | ISO 2424 | Ecoworx S™ Polyolefin Plastomer |
| Vezel | ISO 2424 | Ecosolution Q100™ Polyamide 6 Bevat 100% Gerecycleerd Materiaal |
| Totale Dikte | ISO 1765 | 6.0 mm |
| Afgewerkte Pooldikte | ISO 1766 | 1.9 mm |
| Totale Massa | ISO 8543 | 2380 g/m² |
| Getuft Gewicht | ISO 2424 | 630 g/m² |
| Effectieve Poolmassa | ISO 8543 | 238 g/m² |
| Pooldichtheid | ISO 8543 | 0.123 g/cm³ |



| | | |
|----------------------------------|---------------|--------------------------|
| Steken | ISO 1763 | 165,000/m² 42 per 10cm |
| Elektrostatische Weerstand | ISO 6356 | ≤ 2.0 kv (Stroll Test) |
| Gebruik Classificatie | EN 1307 | 33 Commercial Heavy |
| Luxe Klasse | EN 1307 | LC1 |
| Dimensionale Stabiliteit | EN 986 | ≤ 0.2% |
| Contactgeluidsisolatie | ISO 10140 | 26 Db |
| Geluidsabsorptieclassificatie | ISO 354/11654 | 0.20 Aw Class E |
| Warmteweerstand m² K/w | ISO 8302 | 0.074 M² K/W Tog 0.74 |
| Weerstand Tegen Droog Uitglijden | ISO 13893 | Pass / No Pulled Loops |
| Kleurvastheid Voor Licht | ISO 105-B02 | >6 |
| Ontvlambaarheid | EN 13501-1 | Bfl-S1 (Adhered Testing) |
| Stoel Met Wielties | EN 985 | ≥2.4 Continuous USE |

The diagram shows five types of tile layouts, each represented by a grid of squares with arrows indicating the orientation of the tiles. The layouts are labeled below each grid:

- Monolithic:** A 2x2 grid where all four tiles have an upward-pointing arrow.
- Quarter Turn:** A 2x2 grid where the top-left and bottom-right tiles have upward-pointing arrows, and the top-right and bottom-left tiles have rightward-pointing arrows.
- Brick:** A 2x3 grid where the top row has two upward-pointing arrows and the bottom row has three upward-pointing arrows.
- Ashlar:** A 2x3 grid where the top row has two upward-pointing arrows and the bottom row has three upward-pointing arrows, with the middle tile of the bottom row having a rightward-pointing arrow.
- Random:** A 2x3 grid where the top row has two rightward-pointing arrows and the bottom row has three rightward-pointing arrows.



26 dB

Corporate Headquarters +1 800 257 7429 | +1 706 532 7984 | Atlanta +1 404 853 7429 | Bengaluru +91 80 6773 0202 | Beijing +86 10 6568 588 | Chicago +1 312 467 1331 | Dubai +971 4 584 6956 | Hong Kong +852 2623 0371 | Latin America (Miami) +1 305 827 5912 | London +44 207 961 4120 | Los Angeles +1 800 233 1614 | Melbourne +61 3 9939 8543 | Mexico City +55 5010 7600 | Mumbai +91 22 6284 5050 | Nantong +86 400 800 7429 | New York +1 212 953 7429 | Paris +33 (0) 1 81 22 44 39 | San Francisco +1 415 955 1920 | Santiago +562 2431 5000 x550 | São Paulo +55 11 3071 1702 | Shanghai +86 21 3338 4000 | Singapore +65 6733 1811 | Sydney +1 800 556 302

Coördinerende Producten

Carpet Tile: **Stone Comfortworx® Tile, Fragment Comfortworx® Tile, Formation Colours Comfortworx® Tile, Fragment Colours Comfortworx® Tile, Stone Colours Comfortworx® Tile, Formation Comfortworx® Tile, Fragment Taskworx® Tile, Stone Taskworx® Tile, Formation Colours Ecoworx S Tile, Fragment Colours Ecoworx S Tile, Formation Colours Taskworx® Tile, Fragment Colours Taskworx® Tile, Fragment Ecoworx S Tile, Formation Taskworx® Tile, Formation Ecoworx S Tile, Stone Colours Taskworx® Tile, Stone Colours Ecoworx® S Tile**

Kenmerken + Certificeringen

Certifications Below Apply Exclusively To The Carpet Tile Rug Itself And Not The Lokworx Tabs Adhesive

| | |
|---|--|
| Cradle to Cradle gecertificeerd™ | Zilver Niveau (Versie 3.1) |
| Environmental Product Declaration (EPD) | 3de Partij Gecertificeerd in Overeenstemming Met ISO14044, ISO14025 & EN15804 |
| Embodied Carbon (Cradle to Gate) | 4.14 kg CO₂/m² |
| Life-Cycle Carbon Emissions | Carbon Neutral |
| milieugarantie | Take Back Policy Offered For All Ecoworx S™ Products |
| land van herkomst | Verenigd Koninkrijk |
| BREEAM Contribution Credit | Certificate of Approval Schools/Offices/Health/Industrial Shed Retail |

Well V2 Contribution Credit

| | |
|--|---|
| X08 Hazardous Material Reduction Part 1: Limit Hazardous Materials Optimization | C2C Silver Level (Version 3.1) |
| X10 Volatile Compound Reduction Part 1 (A): Manage Volatile Organic Compounds (VOCs) Optimization | C2C Silver Level (Version 3.1) |
| X11 Long Term Emissions Control Part 2: Flooring Optimization | M1> Emissions Class For Building Material |
| X13 Enhanced Material Precaution Part 1: Select Optimized Materials Optimization | C2C Silver Level (Version 3.1) |
| X14 Material Transparency Part 1: Promote Ingredient Disclosure Optimization | C2C Silver Level (Version 3.1) |

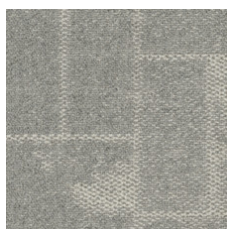
Groen Leed Bijdragekrediet

| | |
|---|---------------------------------------|
| "MR-krediet: Openbaarmaking en optimalisering van bouwproducten Materiaalingrediënten - Optie 1: Rapportage materiaalingrediënten" | C2C Silver Level (Version 3.1) |
| "MR-krediet: openbaarmaking en optimalisering van bouwproducten Materiaalingrediënten - Optie 2: Optimalisering van materiaalingrediënten" | C2C Silver Level (Version 3.1) |

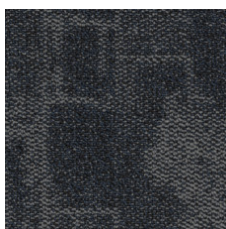
Memberships

| | |
|---------------------------------|--|
| WGBC Framework | WGBC Framework |
| UKGBC | UKGBC |
| Emirates Green Building Council | Emirates Green Building Council |
| Chemsec | Chemsec |

Available Colorways



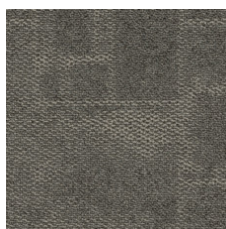
Marble 53100



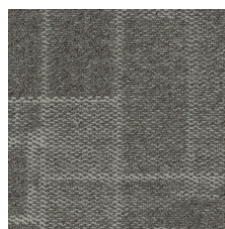
Azurite 53485



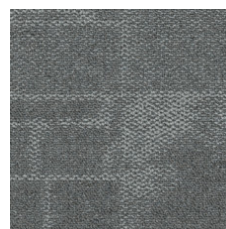
Granite 53500



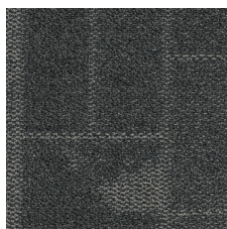
Mica 53518



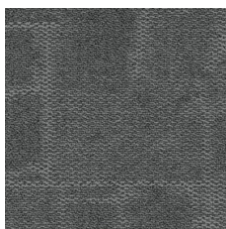
Mortar 53530



Limestone 53535



Anthracite 53555



Chromite 53580



Mix 53597

Aanvullende Informatie

**Manufactured in ISO 9001 certified facility. Meets or exceeds all local and national regulations in country of manufacture.

[Installation Guidelines](#)

[Maintenance Guidelines](#)

[lifetime commercial limited](#)

Specifications are subject to nominal manufacturing variance. Material supply and/or manufacturing processes may necessitate changes without notice.

This product is an exclusive design and may not be duplicated in any manner. Use of this design in the creation of another product design is also strictly prohibited.

Visit shawcontract.com/testing for more information.



Corporate Headquarters +1 800 257 7429 | +1 706 532 7984 | **Atlanta** +1 404 853 7429 | **Bengaluru** +91 80 6773 0202 | **Beijing** +86 10 6568 588 | **Chicago** +1 312 467 1331 | **Dubai** +971 4 584 6956 | **Hong Kong** +852 2623 0371 | **Latin America (Miami)** +1 305 827 5912 | **London** +44 207 961 4120 | **Los Angeles** +1 800 233 1614 | **Melbourne** +61 3 9939 8543 | **Mexico City** +55 5010 7600 | **Mumbai** +91 22 6284 5050 | **Nantong** +86 400 800 7429 | **New York** +1 212 953 7429 | **Paris** +33 (0) 1 81 22 44 39 | **San Francisco** +1 415 955 1920 | **Santiago** +562 2431 5000 x 550 | **São Paulo** +55 11 3071 1702 | **Shanghai** +86 21 3338 4000 | **Singapore** +65 6733 1811 | **Sydney** +1 800 556 302